

Fall at the Museum

September 11, 2008 – November 23, 2008

You See: The Early Years of the UC Davis Art Department

The exhibit contains artworks by five of the most significant artists to ever live and work in Northern California: Robert Arneson, Roy De Forest, Manuel Neri, Wayne Thiebaud, and William T. Wiley. These artists' images and ideas changed the world of art. A generation ago they established a strong regional presence and gave us fresh new images that reflect and shape Northern California today.

Transcendental Observation:

A Retrospective of Works by Contemporary Realist Dorothy Churchill-Johnson

A major retrospective of over 30 oil paintings and ink drawings will span more than three decades in this stunning exhibit. Four distinctive series of beautiful yet commonplace natural objects include early pen and ink drawings and oil paintings from her Zen Still Life, Surreal Landscape and Abstract Realism series. Uniquely Californian, the works are distinguished by a rare combination of technical mastery and visionary storytelling filled with deep metaphors and universal truths.

Labor and Leisure

Watercolor Paintings from the Collection of George and Marcia Giumarra

"California Style" watercolor paintings will take you on a journey into the past, to the places of California's cities, industrial sites and landscapes to visit the people within those environments. This style was very popular in the mid 1920s – 1950s. The difference in this style was the use of bold brush strokes and vivid colors where the artists became storytellers of everyday life in California.

Collector's Gallery Introduces: Santa Barbara Abstractions

Five artists from Santa Barbara County join together to show a variety of styles and subject matter but with the common ground of similar "place" in which they paint. The Collector's Gallery is taking a new spin where every six months a new set of regional artists from various parts of California will show their works. Santa Barbara artists in this first attempt to show regional artists include: Peggy Ferris, Kathleen Elsey, Seyburn Zorthian, Roz Lord and Pamela Hill Enticknap, all painters of figurative or abstract art.


Bakersfield Museum of Art
1930 R Street • Bakersfield, California 93301

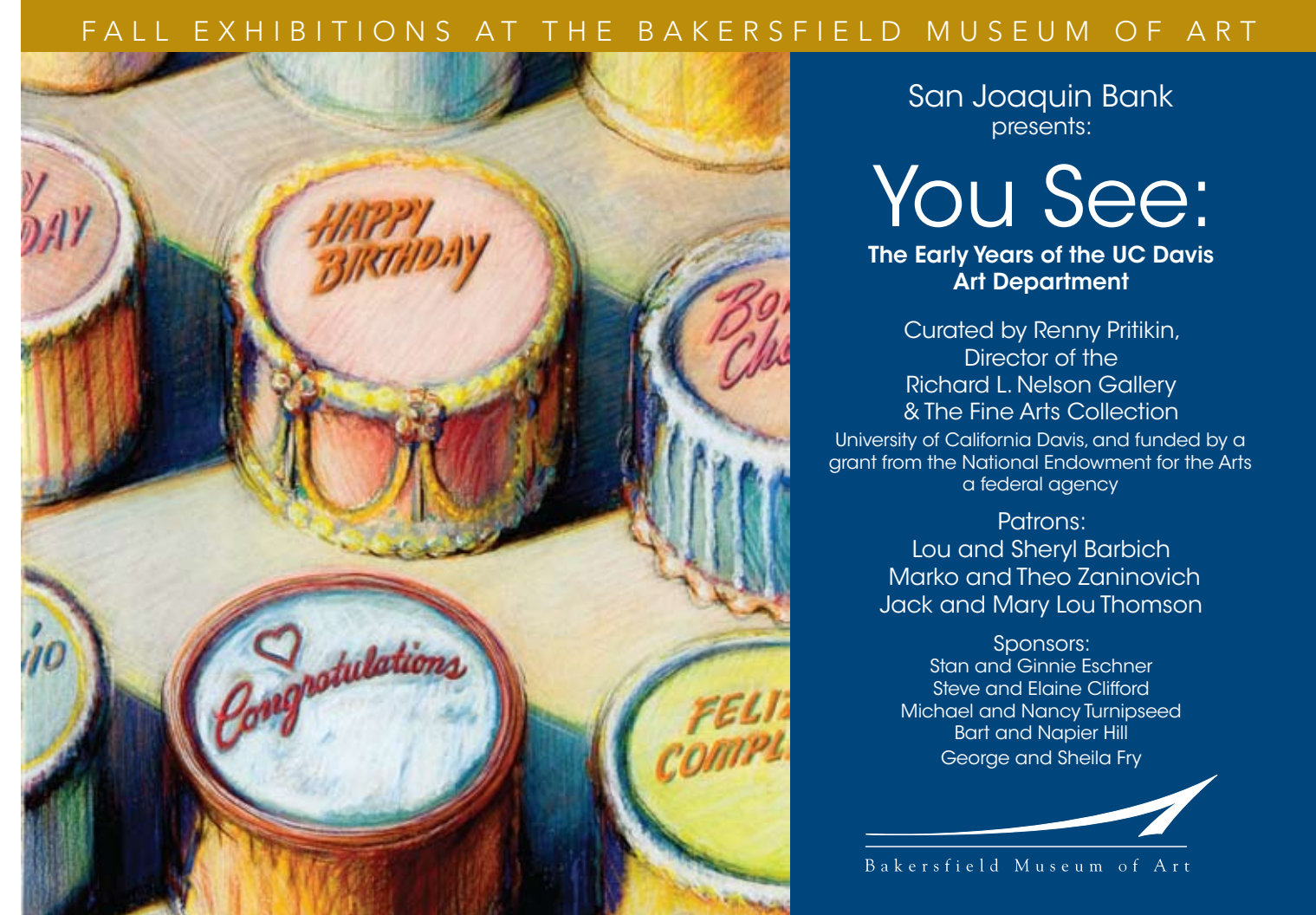
Sept 11
MARK YOUR CALENDAR

Non-Profit Organization
U.S. Postage
Paid
Bakersfield, California
Permit Number 711



Participating Artists:

- Vikki Cruz
- Brent Eviston
- David Gordon
- Nicole Saint-John
- Eleanor Clark
- Phyllis Oliver
- Linda Brown
- Kevin Hardin
- Alberto Herrera
- Liz Sherwyn
- Prapat Sirinavarat
- Nancy Putney
- Jane Xin
- Yvonne Cavanagh
- Charlotte White
- Cindy Stiles
- Betty Woollomes
- Nora Gonzales
- Kaleigh Tinkle



San Joaquin Bank
presents:
You See:
The Early Years of the UC Davis Art Department

Curated by Renny Pritikin,
Director of the
Richard L. Nelson Gallery
& The Fine Arts Collection
University of California Davis, and funded by a
grant from the National Endowment for the Arts
a federal agency

Patrons:
Lou and Sheryl Barbich
Marko and Theo Zaninovich
Jack and Mary Lou Thomson

Sponsors:
Stan and Ginie Eschner
Steve and Elaine Clifford
Michael and Nancy Turnipseed
Bart and Napier Hill
George and Sheila Fry


Bakersfield Museum of Art



Approaching Autumn | Oil on canvas

Transcendental Observation:
A Retrospective of Works by
Contemporary Realist Dorothy Churchill-Johnson

Sponsors: Gary and Cynthia Icardo

On the Cover:
Wayne Thiebaud
Celebration Cakes
1992
Pastel on paper
Collection of Richard L. Nelson
Gallery, University of California Davis

Members and guests are cordially invited to attend the opening reception of
You See: The Early Years of the UC Davis Art Department
and
**Transcendental Observation: A Retrospective of Works by
Contemporary Realist Dorothy Churchill-Johnson**

and
Labor and Leisure

Watercolor Paintings from the Collection of
George and Marcia Giumarra

Eye Gallery: 19 Local Artists Portray Kern County

A Project of the Bakersfield Californian

Thursday, September 11, 2008

6:00 – 8:00 pm

No-host bar and hors d'oeuvres by PM Custom Catering

\$10 general public • Members are FREE

RSVP by September 8 to 661-323-7219



1930 R Street

Museum hours:

Tuesday- Friday 10 am – 4 pm

Saturday and Sunday Noon – 4 pm

www.bmoa.org



Ruth Ortlieb | Tuna Packing | Watercolor

Labor and Leisure
Watercolor Paintings from the Collection of
George and Marcia Giumarra

Sponsors: Don and Cathy Palla
and San Joaquin Bank